

For Immediate Release

## **HKBN + ICG to offer Big Company IT Capabilities at Small Company Affordability**

(Hong Kong, 22 January 2010) Hong Kong Broadband Network Ltd (“HKBN”), a wholly owned subsidiary of City Telecom (HK) Limited (HKEX: 1137, NASDAQ: CTEL), together with The I-Consulting Group (ICG), an IT outsourcing and consultancy specialist, today announced the launch of “iCARE” Managed IT, offering big company IT capabilities at small company affordability, starting at US\$641.

Traditionally, only large companies can afford dedicated IT professionals to plan, build and manage IT resources that meet the every changing business needs. Essential IT services such as preventative maintenance, offsite storage, automatic software updates, customized network security, disaster recovery etc were priced beyond the means of small-to-medium enterprises. By partnering HKBN’s pioneering fibre based broadband network and ICG’s “iCARE” managed IT services, an integrated IT solution is now available, starting from US\$641. For details on the “iCARE” service option, please kindly refer to the Appendix.

HKBN’s Managing Director of Corporate Division, Mr. John Chong said, “With the introduction of ultra high speed broadband technology, effective IT solutions is no longer a luxury, rather it is critical to corporate success. HKBN is very proud of the strategic partnership with IT consultancy expert ICG, and I am confident that both our award winning quality management standard would make a lasting impact on revolutionizing IT applications by SMEs & MNCs in Hong Kong.”

Mr. Andy Lau, Director of The I-Consulting Group said, “Cutting edge IT solutions can only be effective and flourish on a speedy and reliable telecommunications network, that’s why we are very excited about the partnership with HKBN, whom is well known for the speed and capacity of their fibre based network. We look very much forward to deliver, through “iCARE”, never-before seen IT advantages to corporations across industries in Hong Kong.”

**- End -**

## **About City Telecom/Hong Kong Broadband Network Limited**

Established in 1992, City Telecom (H.K.) Limited (HKEX: 1137, NASDAQ: CTEL) provides integrated telecommunications services in Hong Kong. City Telecom's wholly-owned subsidiary, Hong Kong Broadband Network Limited (HKBN), is in the process of expanding its self-built Next Generation fibre network. HKBN has achieved an aggregate Voice, Broadband (symmetric 25Mbps up to 1Gbps) and IP-TV services base in excess of 1,004,000 subscriptions. Additional information on City Telecom can be found at [www.ctigroup.com.hk](http://www.ctigroup.com.hk).

## **About HKBN Corporate Solutions**

Equipping with the largest scale fibre based next generation network in the world, HKBN Corporate Solutions was the first to introduce "optical fibre all the way" from our data centre to customer's computer end in Hong Kong. Via Fibre-To-The-Office (FTTO) technology, HKBN Corporate Solutions has been supporting SMEs and MNCs in Hong Kong with ultra high speed up / download symmetrical broadband service from 25Mbps upto 1000Mbps, and is rapidly expanding service coverage from current 1,230 to 2,000 commercial buildings. Additional information on HKBN Corporate Solutions can be found at <http://corp.hkbn.net/index.html>.

## **About The I-Consulting Group**

ICG is a professional firm specializing in IT Managed Services & Consulting Services. In response to overwhelming demands from companies who are looking for a cost effective solutions to assist them to run IT Departments, ICG introduces an innovative service model that enables IT Performance to be Measurable, and Easy to Manage at an affordable rate. ICG's success stems from its passion for top quality management.

ICG is the only IT Service Provider in Hong Kong who has attained International Quality Management Standard ISO9001:2008 and won the Quality Award 2009 for SMEs awarded by the *Hong Kong Management Association*. ICG delivers IT services based on Information Technology Infrastructure Library (ITIL®) best practise. Additional information on The I-Consulting Group can be found at <http://www.i-cg.com>

For Enquiries, please contact

### **Corporate Communications Hong Kong Broadband Network Ltd.**

Ms. Jessie Cheng  
Tel: +852 3145 4118  
Fax: +852 2199 8372  
Email: [chengcm@ctihk.com](mailto:chengcm@ctihk.com)





### **Marketing & Communications The I-Consulting Group "ICG"**

Ms. Michelle Cheong  
Tel: +852 2369 9618  
Fax: +852 2368 9479  
Email: [michelle.cheong@i-cg.com](mailto:michelle.cheong@i-cg.com)

### **Investor Engagement Hong Kong Broadband Network Ltd.**

Ms. Peggy Chan  
Tel: +852 3145 6068  
Fax: +852 2199 8655  
Email: [investor\\_engagement@ctihk.com](mailto:investor_engagement@ctihk.com)

## Appendix : iCARE Service Package & Features

Service Option	Corporate Scale	Service Details	Original Price	Fibre-based Customers Price
 IT Assessment - SME	< 40 	✓ 1 Hour Consultation ✓ Comprehensive IT Assessment	3,205 USD / HK\$25,000	641 USD / HK\$5,000
 IT Assessment - CORPORATE	40 - 100 	✖ 2 Hours Presentation ✖ 5 Key Reports	6,410 USD / HK\$50,000	1,282 USD / HK\$10,000

### Key Features:

The iCARE IT Assessment provides business leaders with the clarity he needs to make successful business decisions.

It will provide visibility in report format of the existing IT environment, Health, Security, Applications, PCs, Servers and Network within 48 Hours – thanks to ICG's proprietary technology ITOSE™



#### Proactive Problem Prevention

Proactive IT assistance to preempt problems before they appear



#### Security

Ensure the high level security on the IT environment



#### IT Made Easy

IT management made simple and transparent with easy to read regular updates



#### Strategic IT Management & Comprehensive Consultancy

Consultancy on resources planning and IT Strategies with in-depth comprehensive reports

Suggest resources planning and IT strategies with comprehensive reports and consultancy



#### Cost Effectiveness

Savings on IT expenditure allows further expansion of scope of business

ITOSE™ Enables Automation & Scale

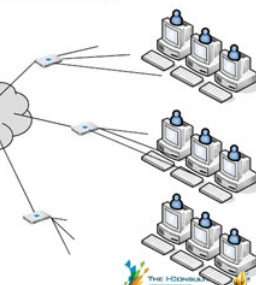
#### ITOSE™ Framework

ITOSE™ enables capability to deliver services over the internet with zero effort and no onsite servers

Services are grouped and delivered from the framework to all machines using templates



Disparate Customer Environments



New Broadband Era

Bandwidth in the Past



Bandwidth Nowadays

**EVENT PHOTO:**



**From Left to right:**

**Mr. Eric Leung, *Vice President of Client Servicing, The I-Consulting Group***

**Mr. Andy Lau, *Director, The I-Consulting Group***

**Mr. Johnny Lee, *General Manager, Jubilee International Tour Centre Limited***

**Mr. John Chong, *Managing Director of Corporate Division, Hong Kong Broadband Network Ltd.***

**Mr. Don Li, *Solution Consultant Manager, Hong Kong Broadband Network Ltd.***