

Global YouTube Video Speed Survey

www.youtube.com/my_speed

Investor Engagement

+852 3145 6068, investor_engagement@ctihk.com

25 Nov 2010

What is www.youtube.com/my_speed?

Extracted from <http://www.google.com/support/youtube/bin/answer.py?answer=174122>

The screenshot shows a Windows Internet Explorer browser window displaying the YouTube Help page for 'Advanced: Video Speed'. The browser's address bar shows the URL <http://www.google.com/support/youtube/bin/answer.py?answer=174122>. The page features the YouTube logo and a search bar. On the left, there is a navigation menu with links to 'Help articles', 'Create & Manage Account', 'Watching', 'Uploading', 'Channels', 'Advanced', 'Solve a Problem', 'Legal', 'Account and Policies', 'Safety', 'Mobile', 'Partner', 'Promoted Videos', 'YouTube Rentals', 'Help forum', 'Videos', 'Channels', and 'Community'. The main content area is titled 'Advanced: Video Speed' and includes a 'Select Language' dropdown menu. Below this, there is a 'General' section with several links: 'What is YouTube video speed history?', 'Why is YouTube doing this?', 'What service/application are the speed numbers for?', 'What are the factors that affect the video speed?', 'Why is the city, state, country shown sometimes incorrect?', 'What does "your location" mean?', 'Can I see the speed numbers for a different service provider, state or country?', 'Why are there weekend drops in the "Speed Comparison over Time" graph?', 'How often is the video speed database updated?', and 'How do I provide feedback?'. A 'Technical' section follows with links: 'Why do I see different speed numbers in YouTube video speed history compared to what I see when using speed tests?', 'I do not see numbers for my video speed though I see video speed numbers for my ISP and for different regions.', and 'How are the speed numbers for a user being computed?'. Finally, a 'Privacy' section contains links: 'Is YouTube logging anything new to provide this service?' and 'Is the speed data linked to my YouTube account?'. The page also includes a 'Share' button, a 'Comment' button, and a 'Print' button.

Video Speed : Advanced - YouTube Help - Windows Internet Explorer

<http://www.google.com/support/youtube/bin/answer.py?answer=174122>

File Edit View Favorites Tools Help

Google Search Share Sidewiki Bookmarks Check Translate AutoFill

Share Browser WebEx

Favorites Suggested Sites Web Slice Gallery Free Hotmail

YouTube - Broadcast Your... Video Speed : Advance...

You Tube Search Help

YouTube Help

Help articles

Create & Manage Account

Watching

Uploading

Channels

Advanced

Solve a Problem

Legal

Account and Policies

Safety

Mobile

Partner

Promoted Videos

YouTube Rentals

Help forum

Videos

Channels

Community

YouTube > Help articles > Advanced > Video Speed

Add the YouTube button to Google Toolbar Add to Toolbar

Search YouTube from Toolbar with one click. See it in action [here](#).

Advanced: Video Speed Share Comment Print

Select Language

Powered by Google Translate

General

[What is YouTube video speed history ?](#)

The YouTube video speed history shows the past video speeds of YouTube videos you watched from your location (your current browser at your current IP address). It also shows aggregate video speed by other users in your city, state, country, and worldwide.

[Why is YouTube doing this ?](#)

Video speed is an important part of your viewing experience since it determines the amount of time you need to wait before you can start watching a video. It is also an important factor in determining the quality of the video you can watch. By making the video speed history data available, we hope to better inform you of speed issues as they relate to your viewing experience, and give you the ability to compare your speed numbers with other users in your region.

[What service/application are the speed numbers for ?](#)

The speed numbers are for YouTube video traffic only.

[What are the factors that affect the video speed ?](#)

There are many factors that affect the video speed. Some of the factors that impact the video speed are the the Internet Service Provider you are using, the distance from your computer to Google servers, the computer you are using, other devices in your network such as other computers and Internet connected appliances. etc.

[Why is the city, state, country shown sometimes incorrect ?](#)

[What does "your location" mean ?](#)

[Can I see the speed numbers for a different service provider, state or country ?](#)

[Why are there weekend drops in the "Speed Comparison over Time" graph ?](#)

[How often is the video speed database updated ?](#)

[How do I provide feedback ?](#)

Technical

[Why do I see different speed numbers in YouTube video speed history compared to what I see when using speed tests ?](#)

[I do not see numbers for my video speed though I see video speed numbers for my ISP and for different regions.](#)

[How are the speed numbers for a user being computed ?](#)

Privacy

[Is YouTube logging anything new to provide this service ?](#)

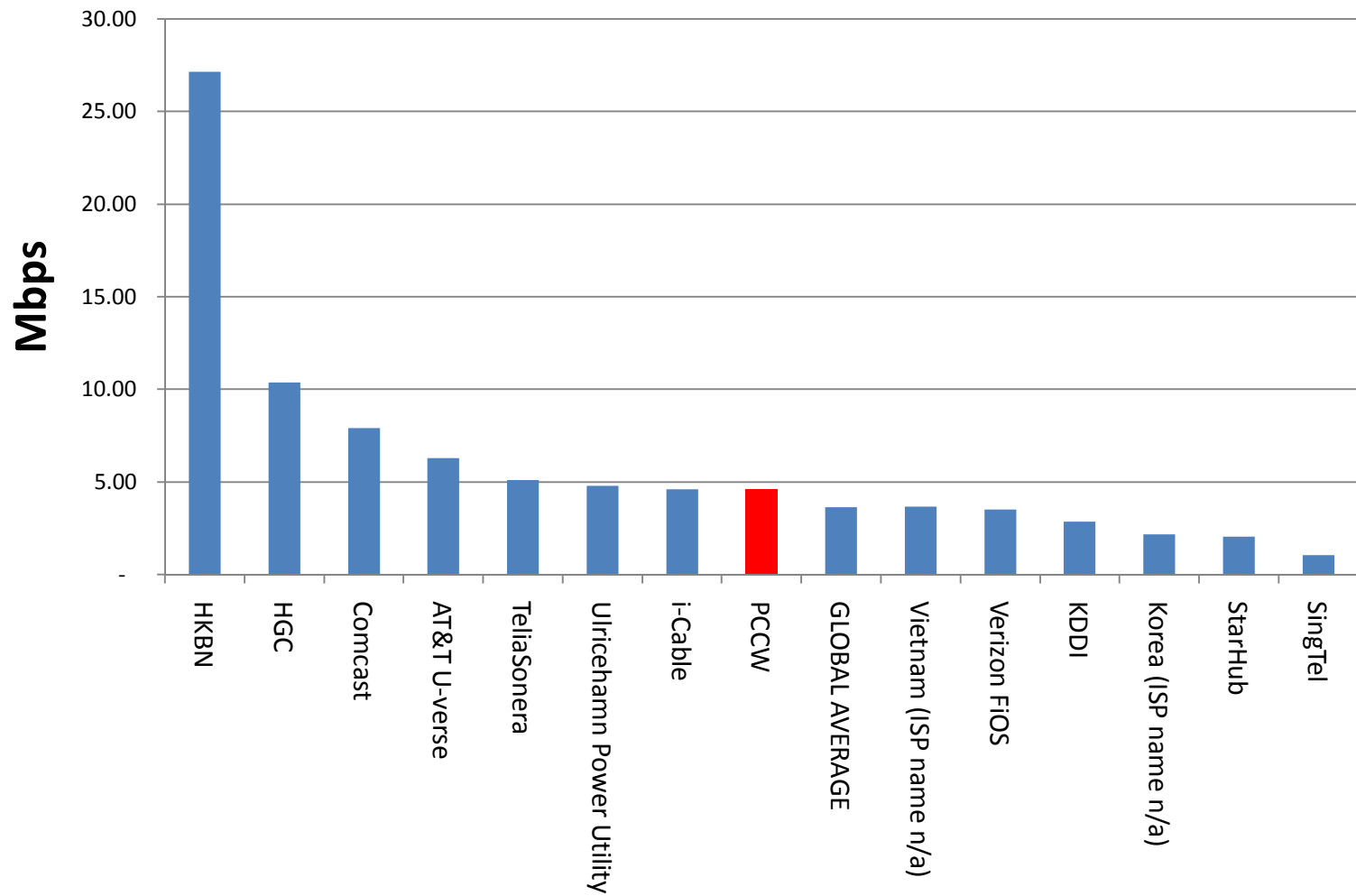
[Is the speed data linked to my YouTube account ?](#)

Global Tests

www.youtube.com/my_speed

Country	Country - Average Speed	ISP	ISP Average Speed	Start	End	Days Tested
Finland	3.62	TeliaSonera	5.09	15-Aug-10	30-Aug-10	15
Hong Kong	12.44	i-Cable	4.60	6-Aug-10	24-Aug-10	18
Hong Kong	12.46	Hong Kong Broadband Network	27.14	30-Jul-10	20-Aug-10	21
Hong Kong	12.46	HGC	10.37	30-Jul-10	20-Aug-10	21
Hong Kong	12.46	PCCW	4.60	30-Jul-10	20-Aug-10	21
Japan	7.51	KDDI	2.84	30-Aug-10	26-Sep-10	27
Korea	1.83	Korea (ISP name n/a)	2.16	30-Aug-10	27-Sep-10	28
Singapore	4.52	SingTel	1.04	4-Aug-10	24-Aug-10	20
Singapore	4.62	StarHub	2.04	4-Aug-10	24-Aug-10	20
Sweden	5.71	Ulricehamn Power Utility	4.79	16-Aug-10	6-Sep-10	21
Vietnam	3.66	Vietnam (ISP name n/a)	3.66	5-Sep-10	3-Oct-10	28
US	6.28	AT&T U-verse	6.28	14-Oct-10	7-Nov-10	24
US	4.37	Comcast	7.91	15-Aug-10	30-Aug-10	15
US	4.37	Verizon FiOS	3.51	15-Aug-10	30-Aug-10	15
GLOBAL AVERAGE	3.63	NA	3.63	14-Oct-10	7-Nov-10	24

ISP Results



Notes: Refer to Previous Slide for Test Dates

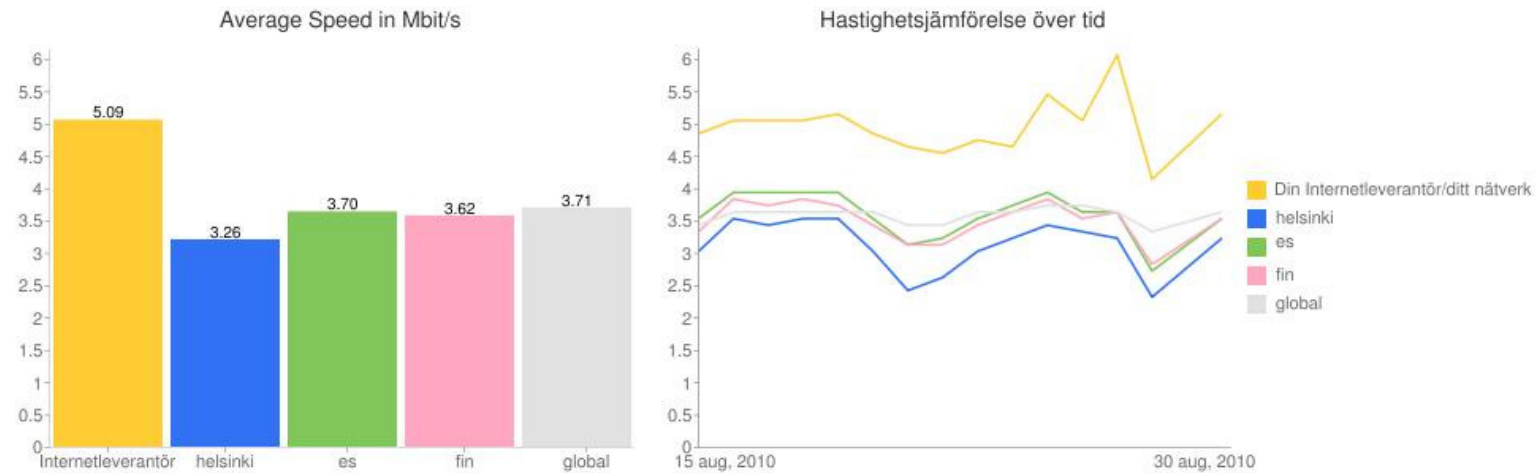
Finland, TeliaSonera

[Sök](#)[Bläddra](#)[Ladda upp](#)[Skapa konto](#)[Logga in](#)

Historik för uppspelningshastighet på YouTube

Vi hittade inga videouppspelningar från din plats.

Jämförelse av videohastighet (15 augusti, 2010 med 30 augusti, 2010)



Informationen har sammanställts från våra videoservrar.

[Visa testvideoklipp](#)

Testvideoklippen visar din direktuppspelningsinformation i realtid (titta bredvid Strömmar HTTP).

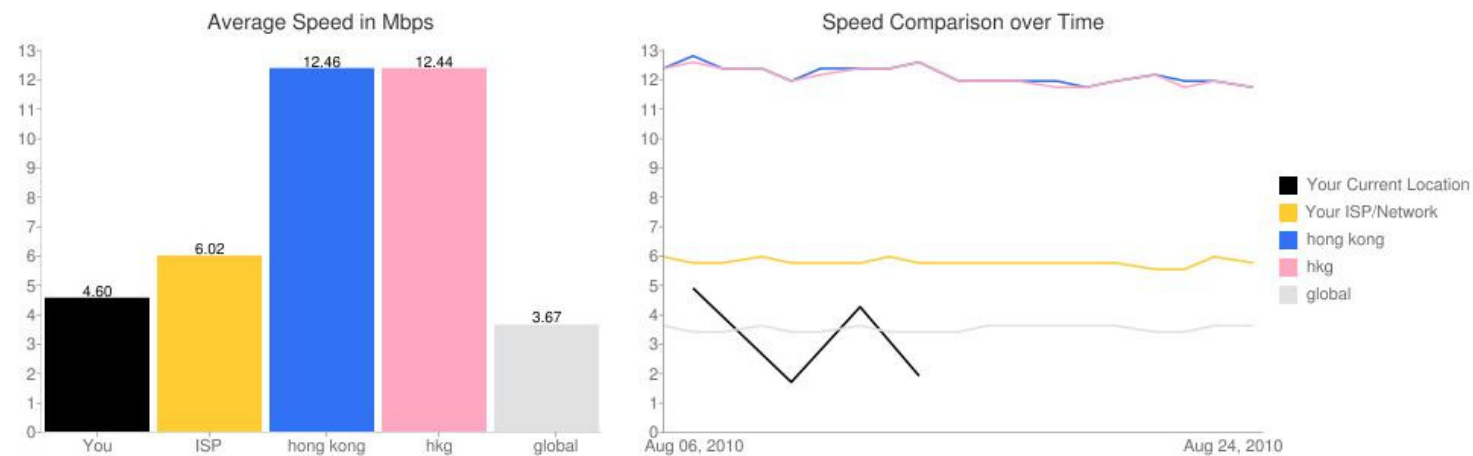
[Läs Vanliga frågor](#)

Hong Kong, i-Cable

YouTube Video Speed History

Your average video speed at this location from August 06, 2010 to August 24, 2010 was 4.60 Mbps.

Video Speed Comparison (August 06, 2010 to August 24, 2010)



This data is aggregated from our video servers.

[View Full Report](#)

Hong Kong, HKBN



Search

Browse

Upload

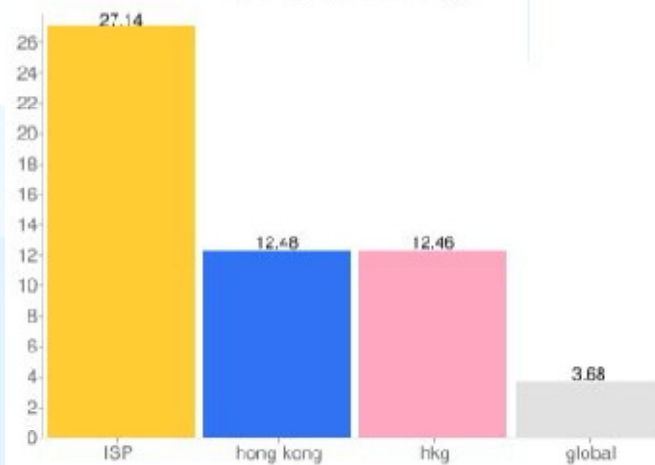
Create Account

Sign in

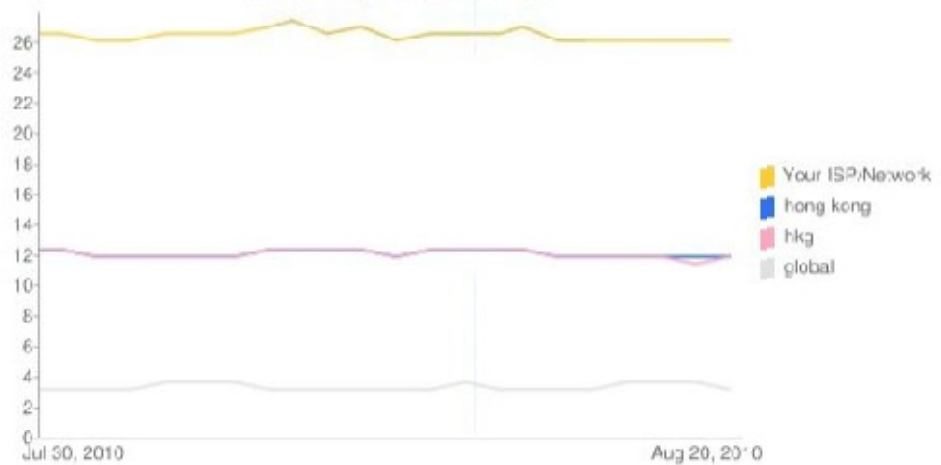
YouTube Video Speed History

Video Speed Comparison (July 30, 2010 to August 20, 2010)

Average Speed in Mbps



Speed Comparison over Time



This data is aggregated from our video servers.

[Show Test Video](#)

The test video will show you your streaming information in real time (look next to "Streaming HTTP")

[Read the FAQ](#)

Hong Kong, HGC



Search

Browse

Upload

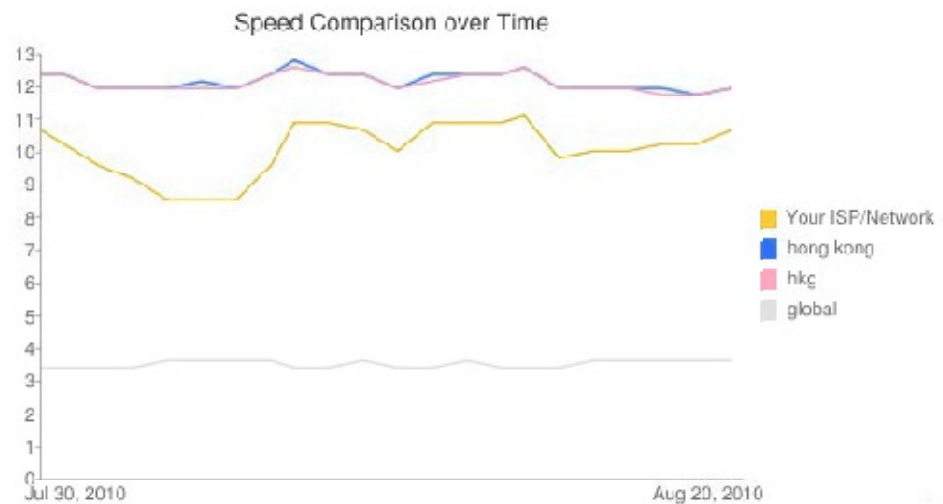
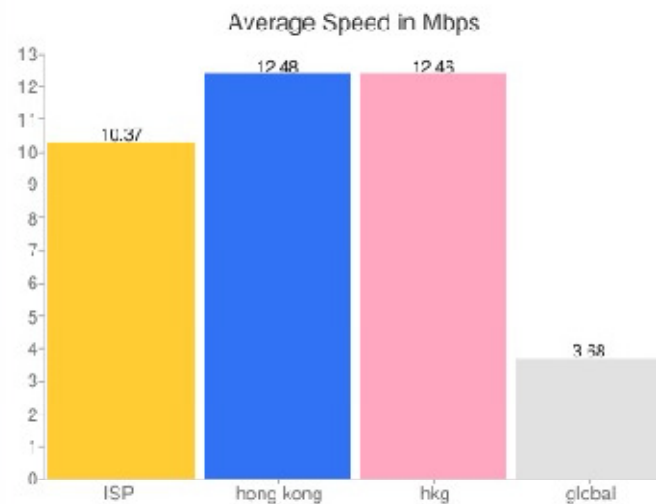
Create Account

Sign In

YouTube Video Speed History

We did not find any video playbacks from your location.

Video Speed Comparison (July 30, 2010 to August 20, 2010)



This data is aggregated from our video servers.

[Show Test Video](#)

The test video will show you your streaming information in real time (look next to "Streaming HTTP")

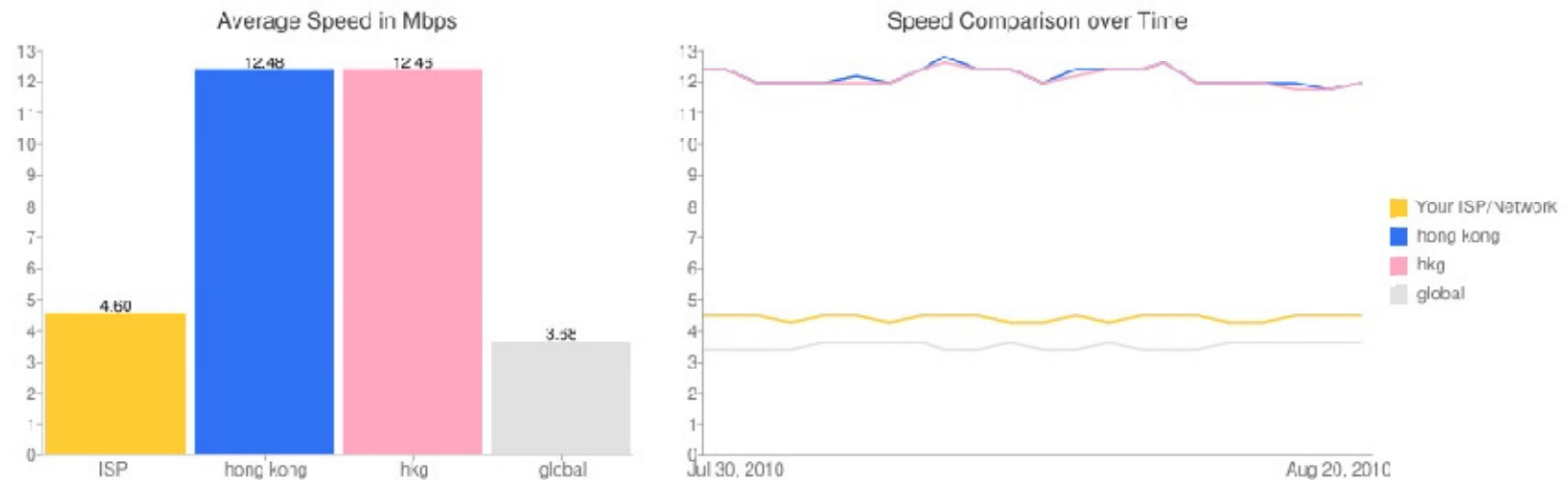
[Read the FAQ](#)

Hong Kong, PCCW

[Browse](#)[Upload](#)[Create Account](#)[Sign In](#)

YouTube Video Speed History

Video Speed Comparison (July 30, 2010 to August 20, 2010)



This data is aggregated from our video servers.

[Show Test Video](#)

The test video will show you your streaming information in real time (look next to "Streaming HTTP")

[Read the FAQ](#)

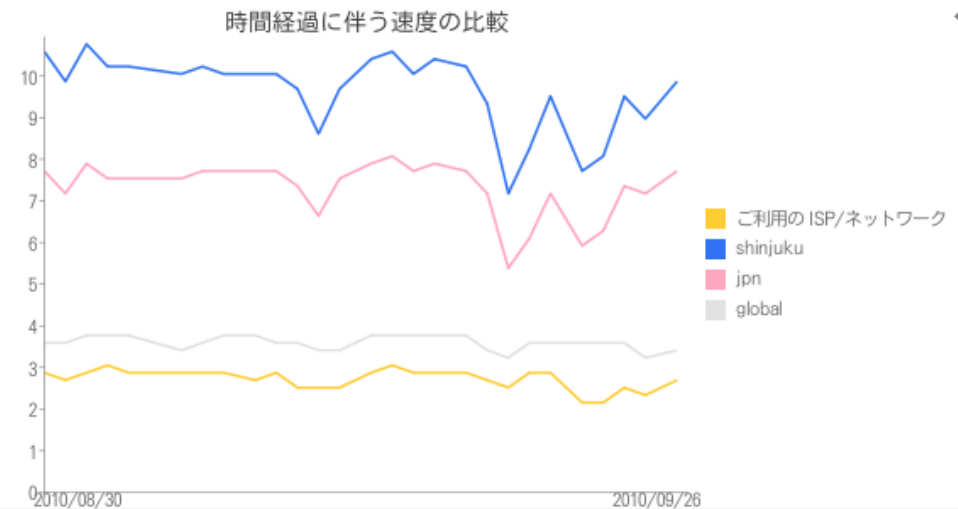
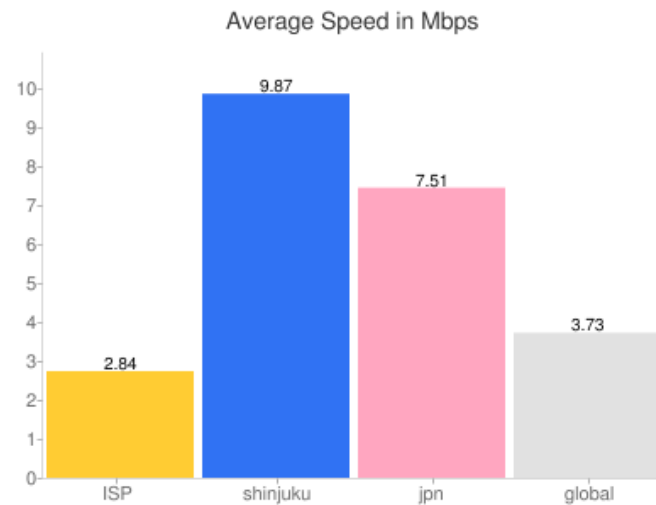
Japan, KDDI

YouTube 動画速度の履歴

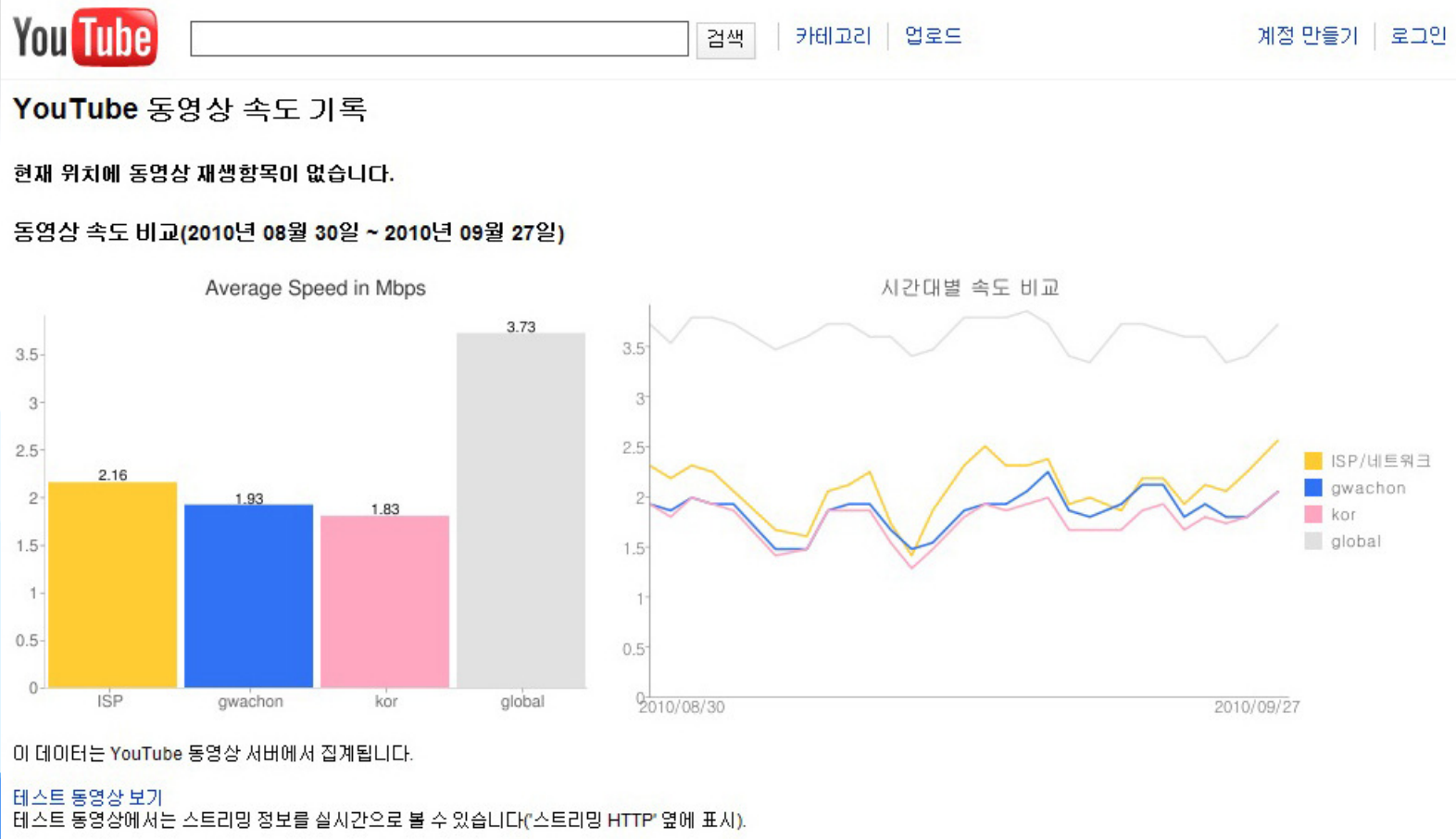
あなたの地域での動画再生は見つかりませんでした。

動画速度の比較（2010年08月30日～2010年09月26日）

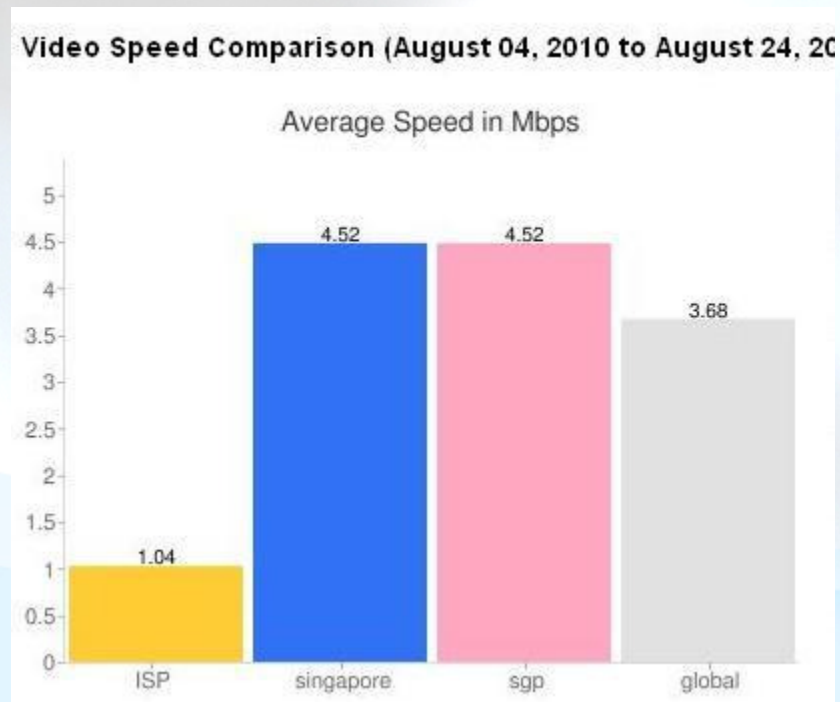
+



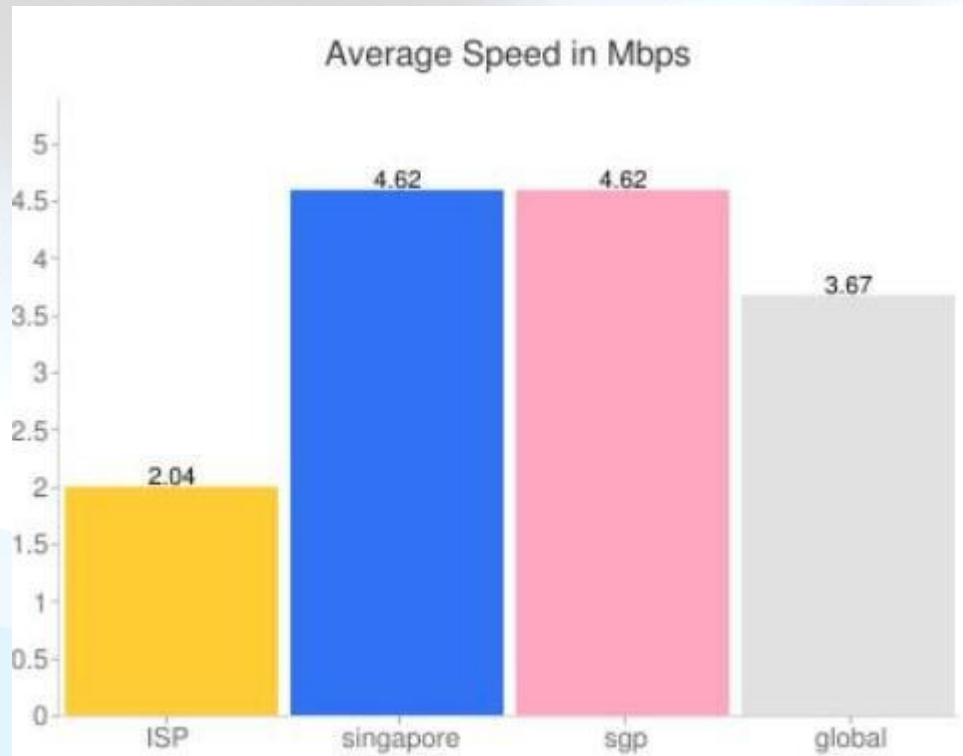
Korea, ISP name not available



Singapore, SingTel (Fixed),



Singapore, StarHub (Fixed),

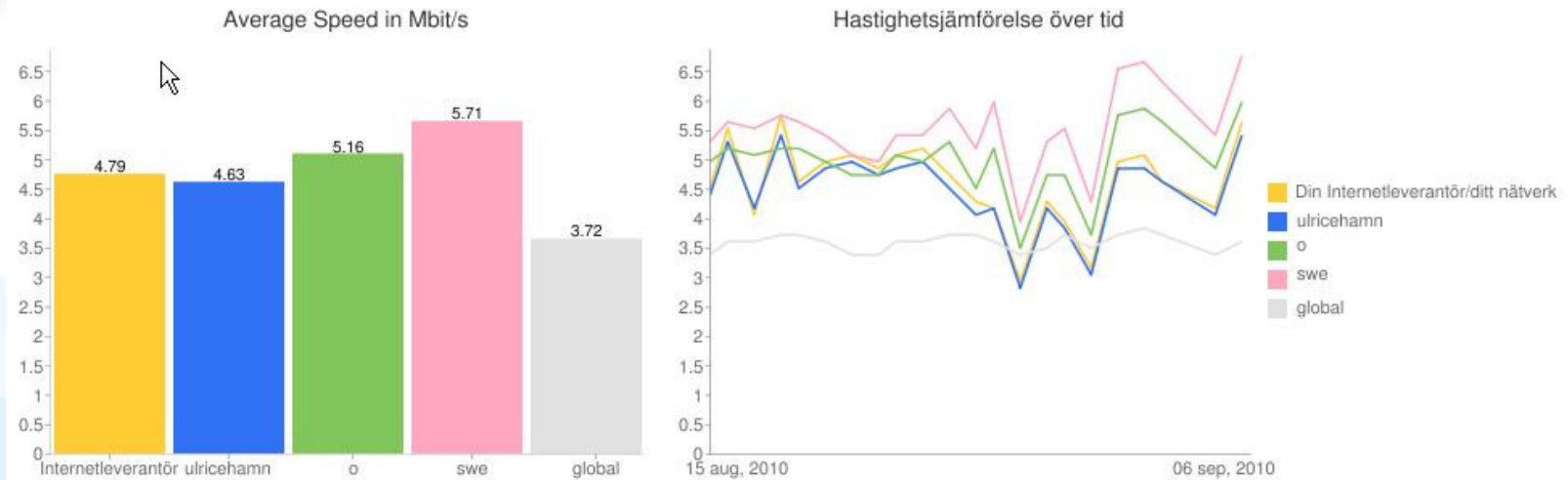


Sweden, Ulricehamn Power Utility

Historik för uppspelningshastighet på YouTube

Vi hittade inga videouppspelningar från din plats.

Jämförelse av videohastighet (15 augusti, 2010 med 06 september, 2010)

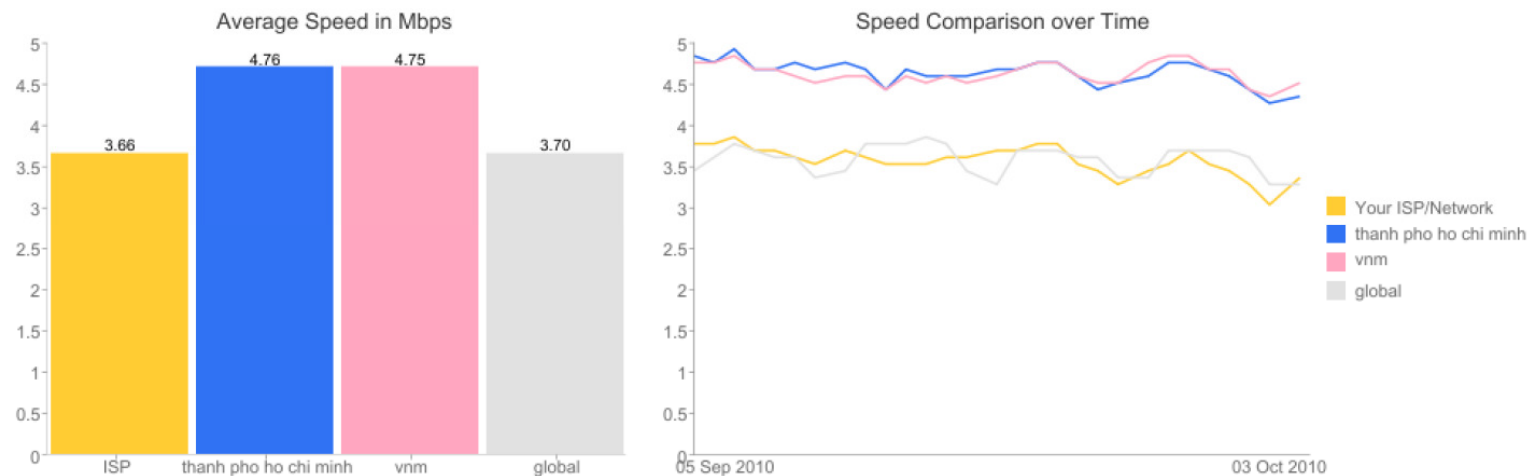


Vietnam, ISP name not available

YouTube Video Speed History

We did not find any video playbacks from your location.

Video Speed Comparison (05 September 2010 to 03 October 2010)



This data is aggregated from our video servers.

[Show Test Video](#)

The test video will show you your streaming information in real time (look next to "Streaming HTTP").

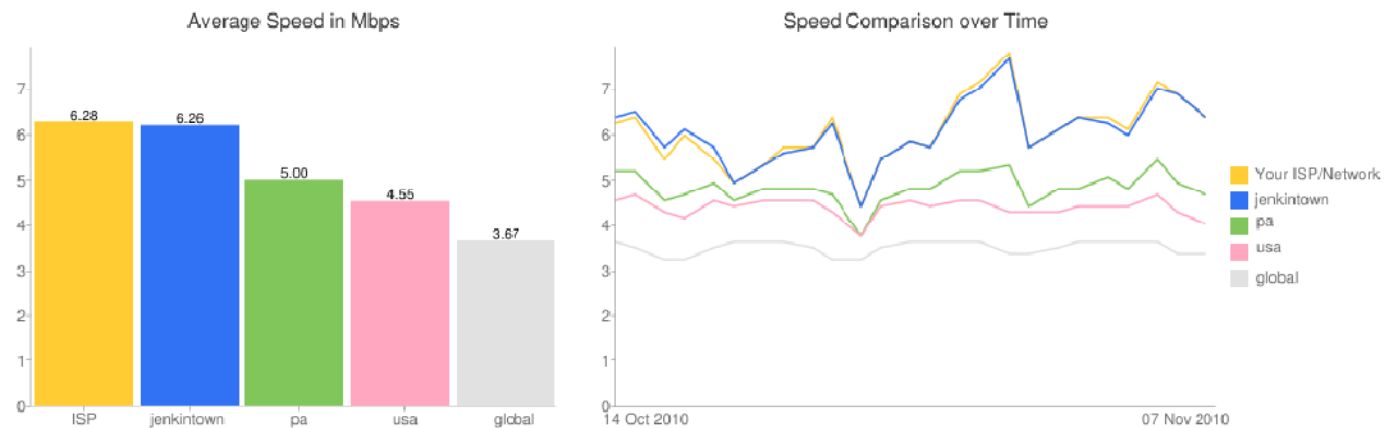
[Read the FAQ](#)

US, AT&T U-verse

YouTube Video Speed History

We did not find any video playbacks from your location.

Video Speed Comparison (14 October 2010 to 07 November 2010)



Results from users of other ISPs near you:

- Verizon [6.41 Mbps]

This data is aggregated from our video servers.

[Show Test Video](#)

The test video will show you your streaming information in real time (look next to "Streaming HTTP").

[Read the FAQ](#)

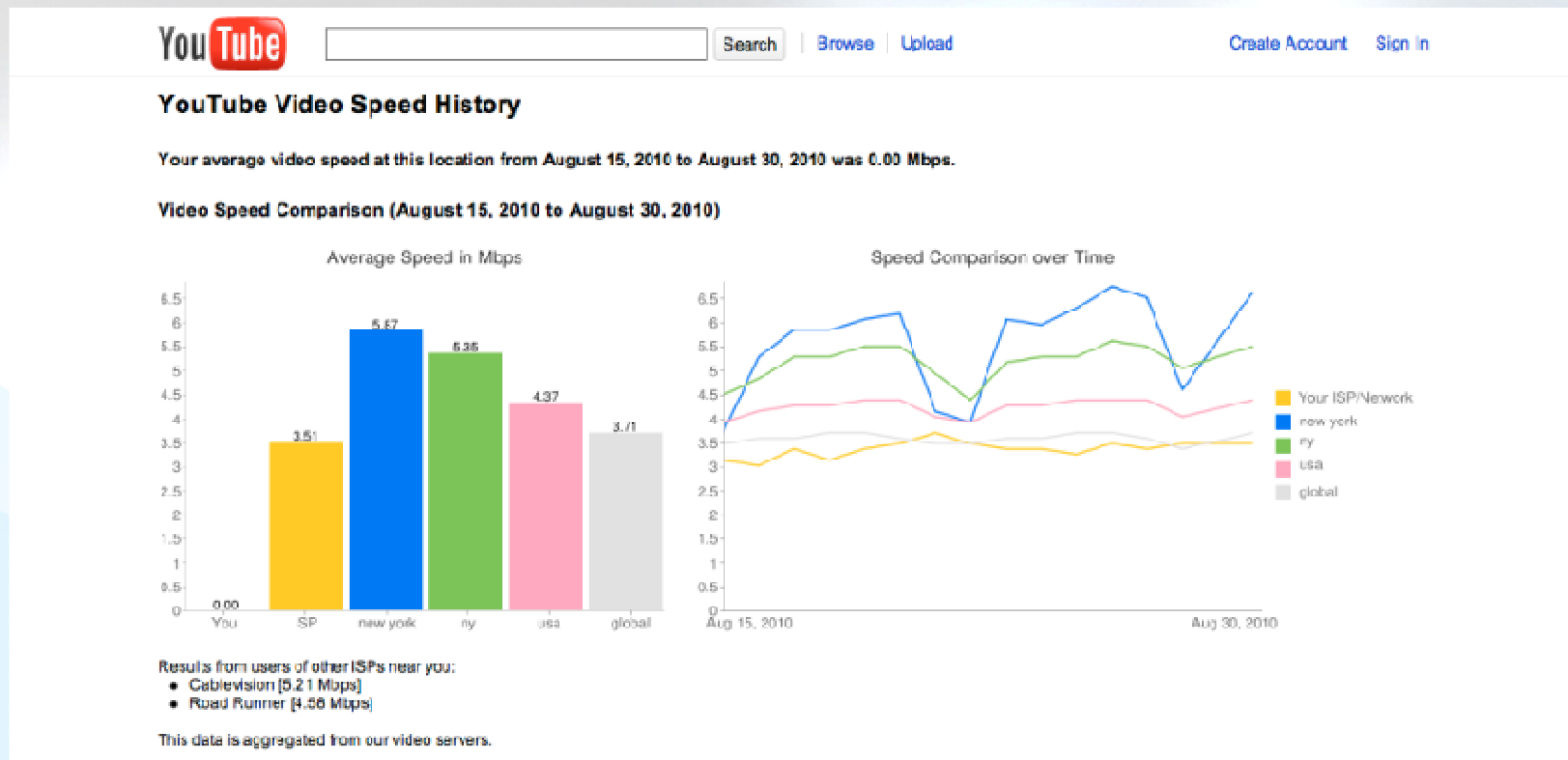
[Help](#) [About](#) [Safety](#) [Privacy](#) [Terms](#) [Copyright](#) [Uploaders & Partners](#) [Developers](#) [Advertising](#)

[Report a bug](#) [Language: English](#) [Location: Worldwide](#) [Safety mode: Off](#)

US, Comcast Cable



US, Verizon FiOS





End

City Telecom Group

